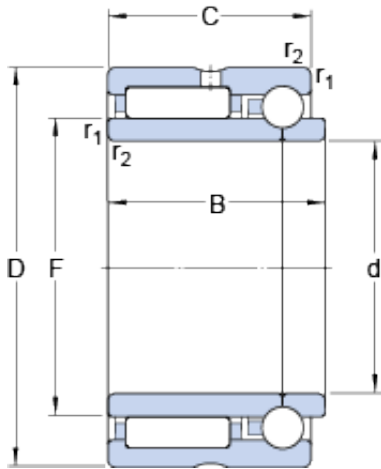




BROWNING BEARING COMPANY



nkib 5901 Bearing 2D drawings and 3D CAD models

12 mm x 24 mm x 17.5 mm skf nkib 5901 bearing

Bearing No. nkib 5901

Size	24x12x17.5 mm
Bore Diameter	24 mm
Outer Diameter	12 mm
Width	17,5 mm
d	12 mm
D	24 mm
B	17.5 mm
C	16 mm
F	16 mm
$r_{1,2}$ - min.	0.3 mm
d_a - min.	14 mm
D_a - max.	22 mm
r_a - max.	0.3 mm
Basic dynamic load rating, radial direction - C	8.1 kN
Basic static load rating, radial direction - C_0	9.6 kN
Basic dynamic load rating, axial direction - C	2.1 kN
Basic static load rating, axial direction - C_0	1.9 kN
Fatigue load limit, radial direction - P_u	1.1 kN
Fatigue load limit, axial direction - P_u	0.083 kN
Reference speed	22000 r/min
Limiting speed	26000 r/min



BROWNING BEARING COMPANY

Category	Roller Bearings
Inventory	0.0
Manufacturer Name	SKF
Minimum Buy Quantity	N/A
Weight / Kilogram	0.037
EAN	7316577739933
Product Group	B04144
bore diameter:	12 mm
closure type:	Open
outside diameter:	24 mm
fillet radius:	0.3 mm
overall width:	17.5 mm
lubrication type:	Grease
bearing type:	Needle Roller/Angular Contact Ball
cage material:	Steel
operating temperature range:	Max 250 ° F
series:	NKIB
radial dynamic load capacity:	8.09 kN
manufacturer product page:	Click here
radial static load capacity:	9.65 kN
manufacturer upc number:	7316577739933
bearing material:	Steel
weight:	0.095 lb
maximum rpm:	26000 rpm
r _{1,2} min.	0.3 mm
d _a min.	14 mm
D _a max.	22 mm
r _a max.	0.3 mm
Basic dynamic load rating, radial direction C	8.09 kN



BROWNING BEARING COMPANY

Basic static load rating, radial direction C_0	9.65 kN
Basic dynamic load rating, axial direction C	2.07 kN
Basic static load rating, axial direction C_0	1.92 kN
Fatigue load limit, radial direction P_u	1.14 kN
Fatigue load limit, axial direction P_u	0.083 kN
Mass bearing	0.043 kg